

MIL-DTL-32139 Nano D-Sub Space Connectors

N06S Crimp Contact Series

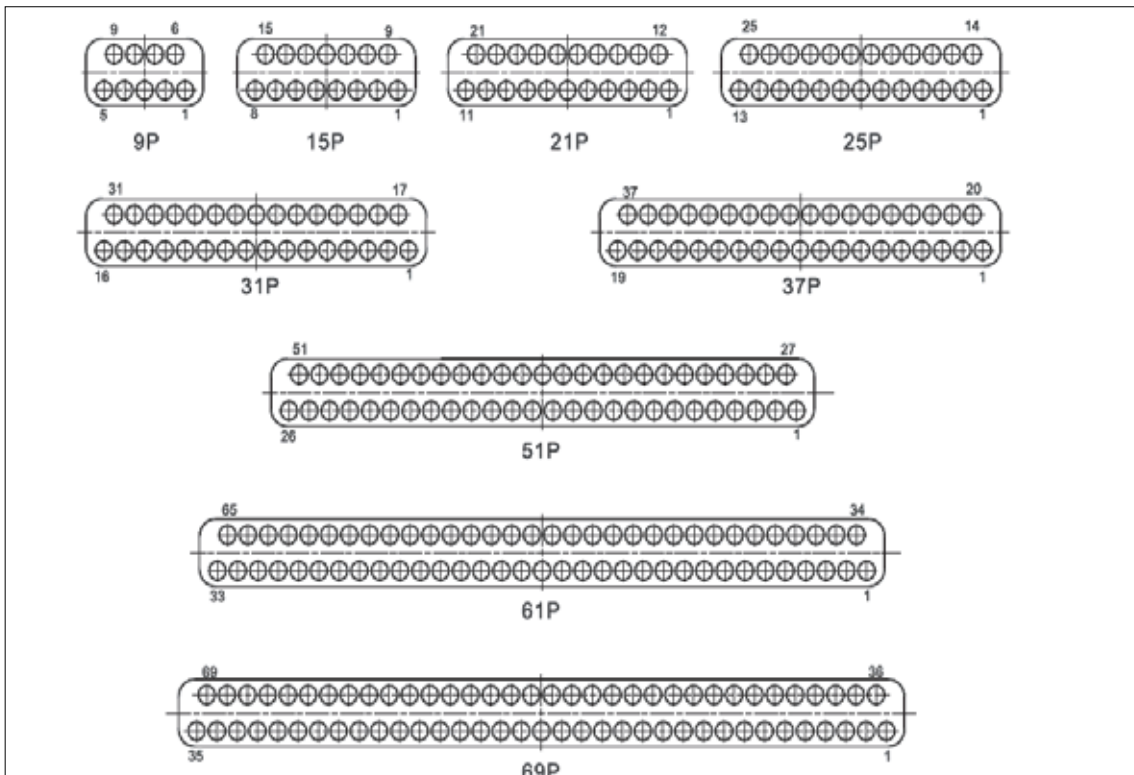
Brief introduction

- Available with no. of contacts: 9,15,21,25,31,37,51,65,69
- Twist pin contacts for improved shock and vibration performance, 0.635mm (0.025") pitch.
- Screw nut locking, easy to insert and extract.
- Commonly used for electrical circuit interconnections with high density, miniaturized, lightweight and high reliability requirements.
- Connector plugs are fitted with twist pin contacts, connector receptacle are fitted with socket contacts
- Standard: MIL-DTL-32139
- Cable conductors cross sectional area is 32AWG (0.035mm²)
- Undefined tolerance is ± 0.13 mm

Specification

- | | | | |
|------------------------|---|--|----------------------------------|
| Environment: | -55°C ~ +125°C | Insulation resistance: | $\geq 5000\text{M}\Omega$ |
| Vibration: | 10Hz ~ 2000Hz acc. at 196m/s ² | Dielectric strength: | 250V |
| Shock: | 980m/s ² for 6ms | Mating durability: | 200 Cycles |
| Rated current: | 1A | Thermal Vacuum | |
| Irradiation Resistant: | Total dose: 1×10^5 GY 0.5Gy(Si)/s | Outgassing: | TML $\leq 1\%$ CVCM $\leq 0.1\%$ |
| Magnetic Permeability: | 200 gamma | Thermal stability: | 125°C ± 2 1000h |
| Contact resistance: | $\leq 21\text{m}\Omega$ | Overload Test: Under rated current 1.5 times. | |
| Random vibration: | power spectrum density 0.4G ² /Hz, r.m.s value of total acceleration 23.1G | Time: Duration 30s then stopped 90s. 5 Cycles. | |

Contact layout



Note: The above layout is viewed from connector plug mating face

MIL-DTL-32139 Nano D-Sub Space Connectors

N06S Crimp Connector Series

How to order

Series	N06S	-2	2	1	-C	2	-9	PI	0	-TH
Contact row: 2 — two rows										
Shell plating: 2 — nickel plating										
Contact plating: 1 — gold plating										
Tail termination type : C — crimp										
Mounting style: 1 — free mounted 2 — vertical mounted 3 — horizontal mounted 4 — crimp siamese 5 — nut mounted 6 — Flange mounted 7 — Floating mounted										
Contact number: 9, 15, 21, 25, 31, 37, 51, 65, 69										
Contact type PI — pin in plug RH — socket in receptacle PP — plug interconnect plug PS — plug interconnect receptacle SS — receptacle interconnect receptacle										
Tail cover: 0 — without tail cover 1 — with tail cover										
Locking component type: 00 — without locking component JC — locking screw (straight slot) JC1 — locking screw (hex, optional) TH — connect nut NH — guide hole with nut mounted										

Mating Connector Choice


- When choosing a mating connector pair with locking accessories, choose one side with connect nut (TH) and the other side with locking screw (JC).
- When choosing a mating connector pair with guide accessories, the mated connectors should be fixed on a mounting panel to avoid the connectors from becoming disconnected. When choosing a mating connector pair with guide components, choose one side with guide pin (DZ) and the other side with guide hole (NH).

MIL-DTL-32139 Nano D-Sub Space Connectors


N06S Free Mounted Crimp Series

Order Code

Series	N06S	-2	2	1	-C	1	-25	PI	0	-JC
Contact row:										
2 — two rows										
Shell plating:										
2 — nickel plating										
Contact plating:										
1 — gold plating										
Termination type :										
C — crimp										
Mounting style:										
1 — free mounted										
Contact number:										
9, 15, 21, 25, 31, 37, 51, 65, 69										
Contact type										
PI — pin in plug RH — socket in receptacle										
Tail cover :										
0 — without tail cover										
Locking type:										
JC — locking screw (straight slot, C dimension = 1.5mm)										
JC1 — locking screw (hex, optional, C dimension = 2.1mm)										



plug

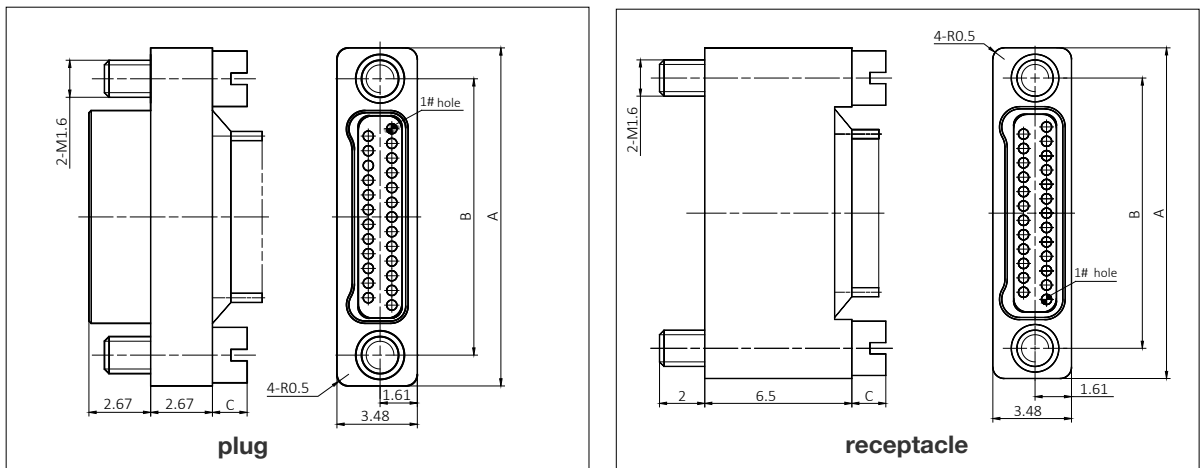


receptacle

Notes

- The locking screw is fixed within the outer connector shell
- Connector is free mounted and usually mated with a plug or receptacle connector which has a captive nut
- JC (straight slot screw) screws are tightened by miniature straight screwdriver
- Optional JC1(hex) screws are tightened by 1.27mm hex screwdriver

Outline dimension



Pin count	Dimension		Pin count	Dimension		Pin count	Dimension	
	A	B		A	B		A	B
9 pins	9.63	6.86	15 pins	11.53	8.76	21 pins	13.44	10.67
25 pins	14.71	11.94	31 pins	16.61	13.84	37 pins	18.52	15.75
51 pins	22.96	20.19	65 pins	27.41	24.64	69 pins	28.68	25.91

Note: All dimensions are in mm

MIL-DTL-32139 Nano D-Sub Space Connectors

N06S Vertical Mounted Crimp Series

Order Code

Series	N06S	-2	2	1	-C	2	-25	PI	0	-JC
Contact row:										
2 — two rows										
Shell plating:										
2 — nickel plating										
Contact plating:										
1 — gold plating										
Termination type :										
C — crimp										
Mounting style:										
Contact number:										
9, 15, 21, 25, 31, 37, 51, 65, 69										
Contact type										
PI — pin in plug RH — socket in receptacle										
Tail cover :										
0 — without tail cover										
Locking type:										
TH — connect nut										



plug

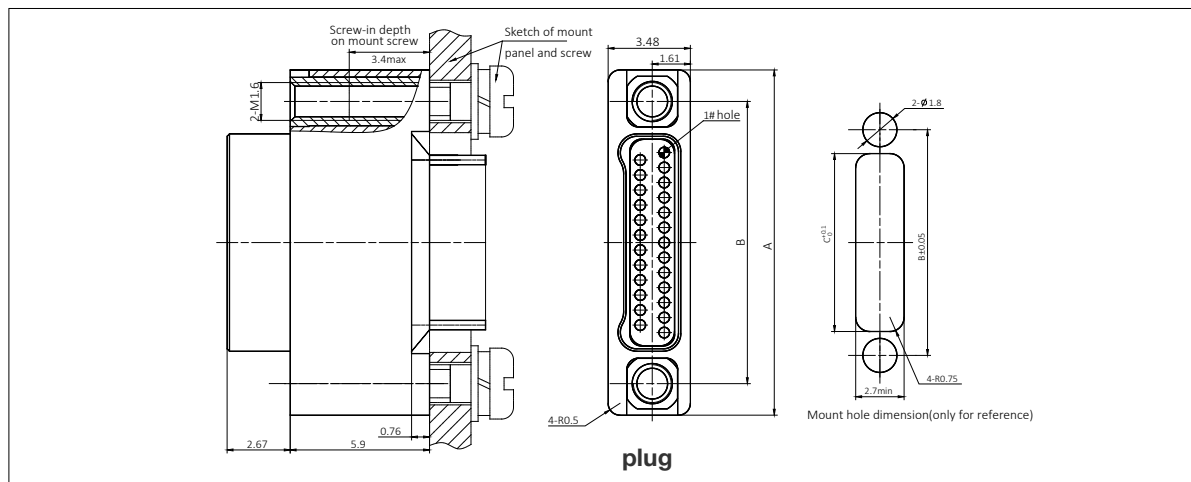


receptacle

Notes

- Front part of the thread is used for mating with locking screw connector, rear part is for panel mounting
- Vertical mounted connector should be paired with a mating locking screw plug or receptacle connector

Outline dimension

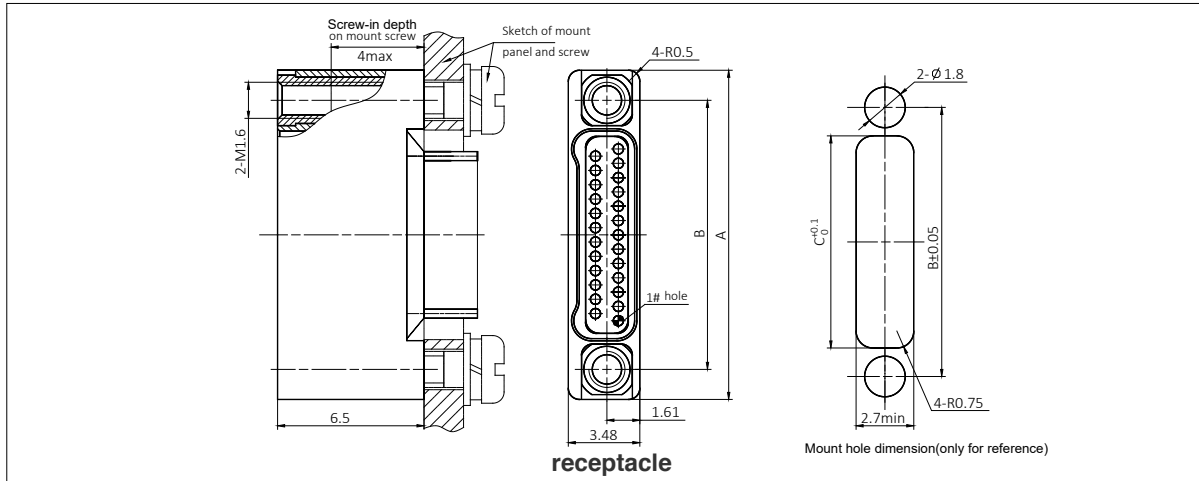


Pin count	Dimension			Pin count	Dimension			Pin count	Dimension		
	A	B	C		A	B	C		A	B	C
9 pins	9.63	6.86	4.2	15 pins	11.53	8.76	6.1	21 pins	13.44	10.67	8
25 pins	14.71	11.94	9.3	31 pins	16.61	13.84	11.2	37 pins	18.52	15.75	13.1
51 pins	22.96	20.19	17.55	65 pins	27.41	24.64	22	69 pins	28.68	25.91	23.25

Note: All dimensions are in mm

MIL-DTL-32139 Nano D-Sub Space Connectors N06S Vertical Mounted Crimp Series

Outline dimension



Pin count	Dimension			Pin count	Dimension			Pin count	Dimension		
	A	B	C		A	B	C		A	B	C
9 pins	9.63	6.86	4.2	15 pins	11.53	8.76	6.1	21 pins	13.44	10.67	8
25 pins	14.71	11.94	9.3	31 pins	16.61	13.84	11.2	37 pins	18.52	15.75	13.1
51 pins	22.96	20.19	17.55	65 pins	27.41	24.64	22	69 pins	28.68	25.91	23.25



Remark: All dimensions are in mm

MIL-DTL-32139 Nano D-Sub Space Connectors

N06S Horizontal Mounted Crimp Series

Order Code

Series	N06S	-2	2	1	-C	1	-25	PI	0	-JC	
Contact row:											
2 — two rows											
Shell plating:											
2 — nickel plating											
Contact plating:											
1 — gold plating											
Termination type :											
C — crimp											
Mounting style:											
3 — horizontal mounted											
Contact number:											
9, 15, 21, 25, 31, 37, 51, 65, 69											
Contact type											
PI — pin in plug RH — socket in receptacle											
Tail cover :											
0 — without tail cover											
Locking type:											
TH — connect nut											

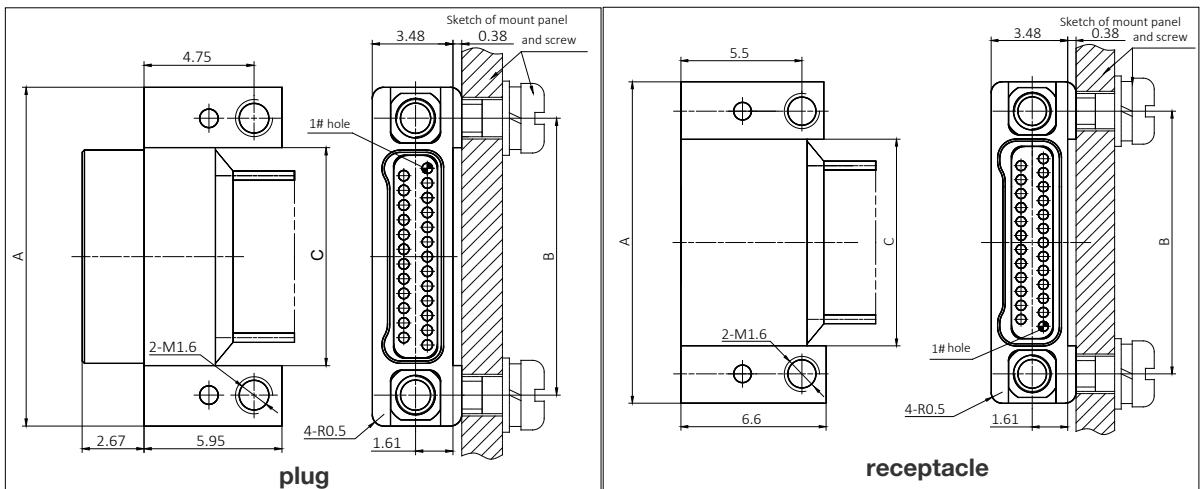



plug
receptacle

Notes

- Horizontal mounted cable plug or receptacle connector
- Connector should be mated with a plug or receptacle connector which has a locking screw

Outline dimension



Pin count	Dimension			Pin count	Dimension			Pin count	Dimension		
	A	B	C		A	B	C		A	B	C
9 pins	9.63	6.86	4.31	15 pins	11.53	8.76	6.22	21 pins	13.44	10.67	8.13
25 pins	14.71	11.94	9.40	31 pins	16.61	13.84	11.30	37 pins	18.52	15.75	13.21
51 pins	22.96	20.19	17.65	65 pins	27.41	24.64	22.10	69 pins	28.68	25.91	23.37


Note: All dimensions are in mm

MIL-DTL-32139 Nano D-Sub Space Connectors


N06S Crimp Siamese Connection Series

Order Code

Series	N06S	-2	2	1	-C	4	-25	PP
Contact row:	2 — two rows							
Shell plating:	2 — nickel plating							
Contact plating:	1 — gold plating							
Termination type :	C— crimp							
Mounting style:	4— crimp siamese							
Contact number:	9, 15, 21, 25, 31, 37, 51, 65, 69							
Contact type:	PP— plug interconnect plug PS— plug interconnect receptacle SS— receptacle interconnect receptacle							



PP

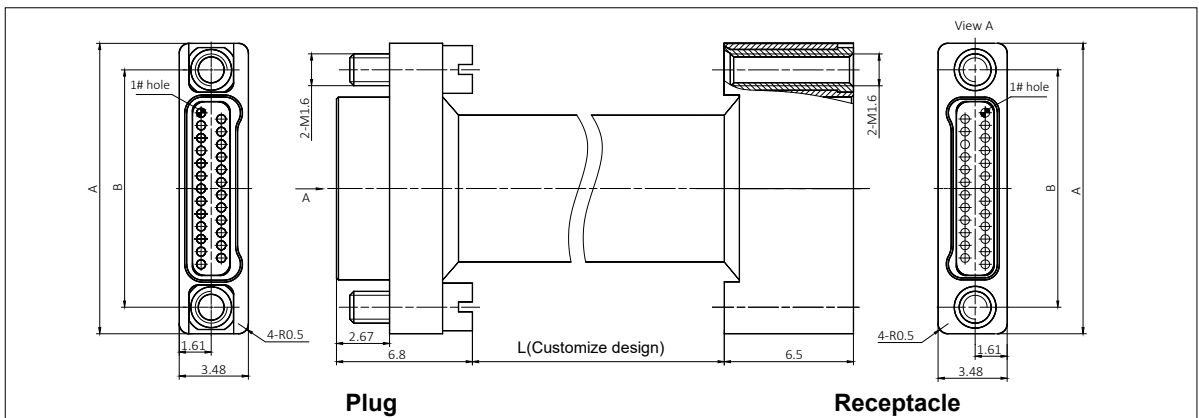


PS

Notes

- The mating locking connector for this series is: (1) Plug with locking screw
(2) Receptacle with locking nut

Outline dimension



Pin count	Dimension		Pin count	Dimension		Pin count	Dimension	
	A	B		A	B		A	B
9 pins	9.63	6.86	15 pins	11.53	8.76	21 pins	13.44	10.67
25 pins	14.71	11.94	31 pins	16.61	13.84	37 pins	18.52	15.75
51 pins	22.96	20.19	65 pins	27.41	24.64	69 pins	28.68	25.91

Note: All dimensions are in mm

MIL-DTL-32139 Nano D-Sub Space Connectors

N06S Nut Mounted Crimp Receptacle with Guide Hole Series

Order Code

Series	N06S	-2	2	1	-C	5	-25	RH	0	-TH	
Contact row:											
2 — two rows											
Shell plating:											
2 — nickel plating											
Contact plating:											
1 — gold plating											
Termination type :											
C— crimp											
Mounting style:											
5— nut mounted											
Contact number:											
9, 15, 21, 25, 31, 37, 51, 65, 69											
Contact type											
RH— socket in receptacle											
Tail cover :											
0— without tail cover											
Locking type:											
NH— guide hole with nut mounted											

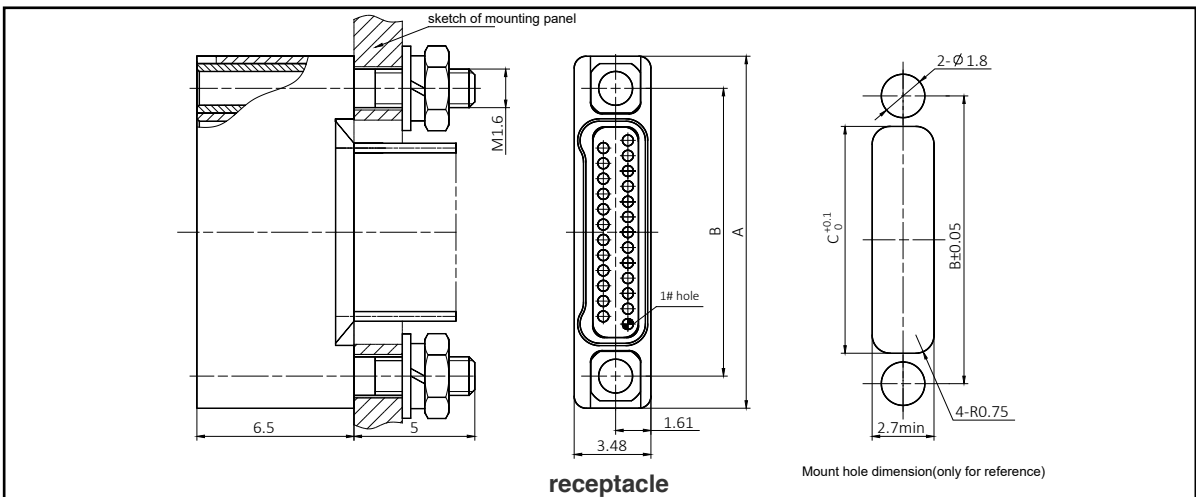


RH

Notes

- Receptacle connector with guide holes, usually mated with plug connector which has guide pins

Outline dimension



Pin count	Dimension			Pin count	Dimension			Pin count	Dimension		
	A	B	C		A	B	C		A	B	C
9 pins	9.63	6.86	4.2	15 pins	11.53	8.76	6.1	21 pins	13.44	10.67	8
25 pins	14.71	11.94	9.3	31 pins	16.61	13.84	11.2	37 pins	18.52	15.75	13.1
51 pins	22.96	20.19	17.55	65 pins	27.41	24.64	22	69 pins	28.68	25.91	23.25

Note: All dimensions are in mm

Order Code

RH

- Receptacle connector with guide hole is usually mated to plug connector which has a guide pin

Outline dimension



Note: All dimensions are in mm

MIL-DTL-32139 Nano D-Sub Space Connectors

N06S Floating Mounted Crimp Plug Series

Order Code

Series	N06S	-2	2	1	-C	7	-25	PI	0	-00
Contact row:										
2 — two rows										
Shell plating:										
2 — nickel plating										
Contact plating:										
1 — gold plating										
Termination type :										
C— crimp										
Mounting style:										
7 — floating mounted										
Contact number:										
9, 15, 21, 25, 31, 37, 51, 65, 69										
Contact type										
PI— pin in plug										
Tail cover :										
0— without tail cover										
Locking type:										
00 — without locking component										

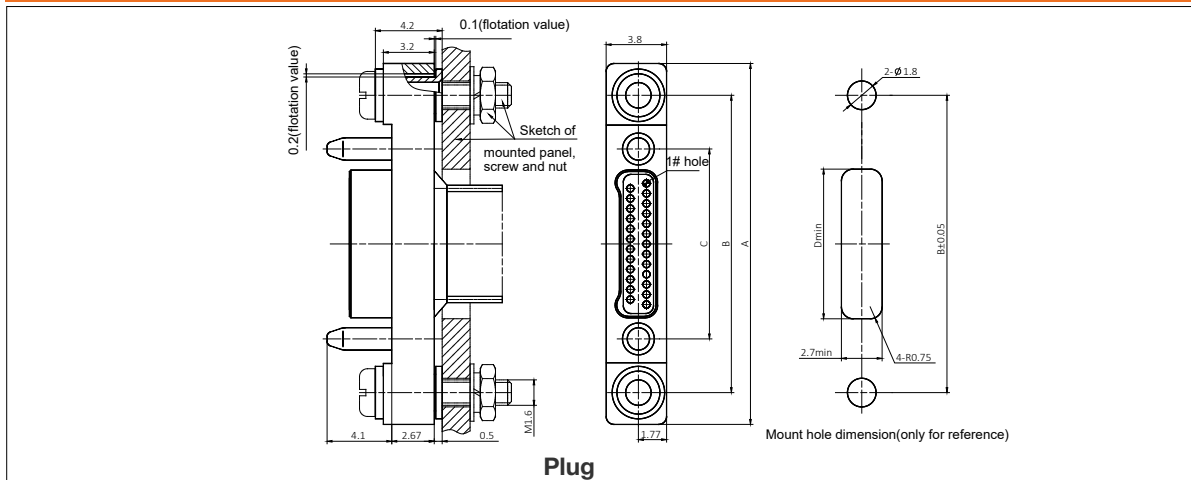


PI

Notes

- Plug connector with guide pin and floating tube, usual application as a blind-mated connector
- Plug connector is usually mated with receptacle connector which has a guide hole

Outline dimension



Plug

Pin count	Dimension				Pin count	Dimension			
	A	B	C	D		A	B	C	D
9 pins	17.6	13.6	6.86	4.2	15 pins	19.5	15.5	8.76	6.1
21 pins	21.4	17.4	10.67	8	25 pins	22.7	18.7	11.94	9.3
31 pins	24.6	20.6	13.84	11.2	37 pins	26.5	22.5	15.75	13.1
51 pins	30.9	26.9	20.19	17.6	65 pins	35.4	31.4	24.64	22
69 pins	36.7	32.7	25.91	23.3					

Note: All dimensions are in mm

MIL-DTL-32139 Nano D-Sub Space Connectors N06S Free Mounted Crimp Connector with Tail Cover Series

Order Code

Series	N06S	-2	2	1	-C	1	-25	PI	1	-JC
Contact row:										
2 — two rows										
Shell plating:										
2 — nickel plating										
Contact plating:										
1 — gold plating										
Termination type :										
C— crimp										
Mounting style:										
1 - free mounted										
Contact number:										
9, 15, 21, 25, 31, 37, 51, 65, 69										
Contact type										
PI— pin in plug RH— socket in receptacle										
Tail cover :										
1— with tail cover										
Locking type:										
JC— locking screw (straight slot, E dimension = 1mm)										
JC1— locking screw (hex, optional ,E dimension = 1.6mm)										



PI

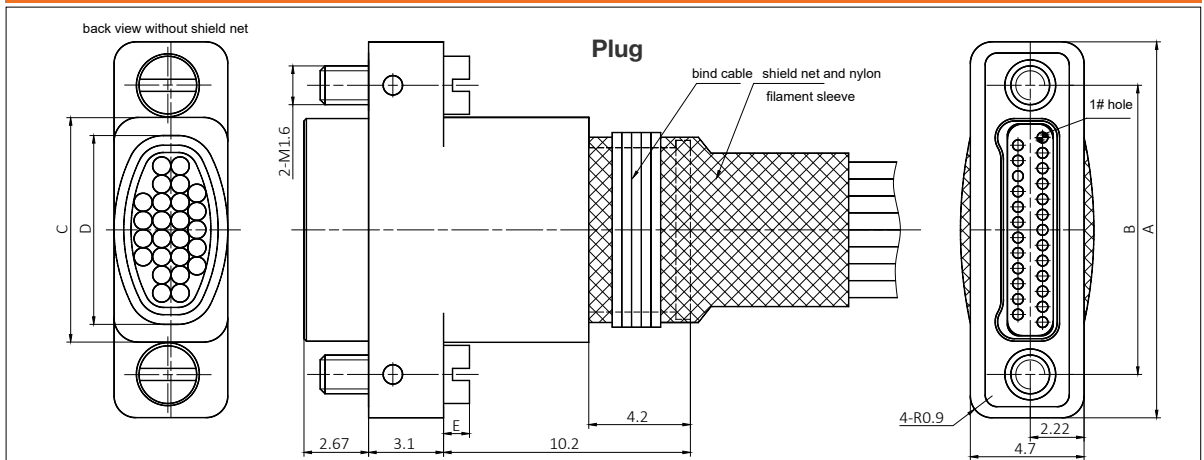


RH

Notes

- Connector has an integrated non-removable tail cover. Apply shielding material onto tail cover to provide shielding for the whole connector
- Connector is free mounted and usually mated with a plug or receptacle connector which has a captive nut
- JC (straight slot screw) screws are tightened by miniature straight screwdriver
- Optional JC1(hex) screws are tightened by 1.27mm hex screwdriver

Outline dimension

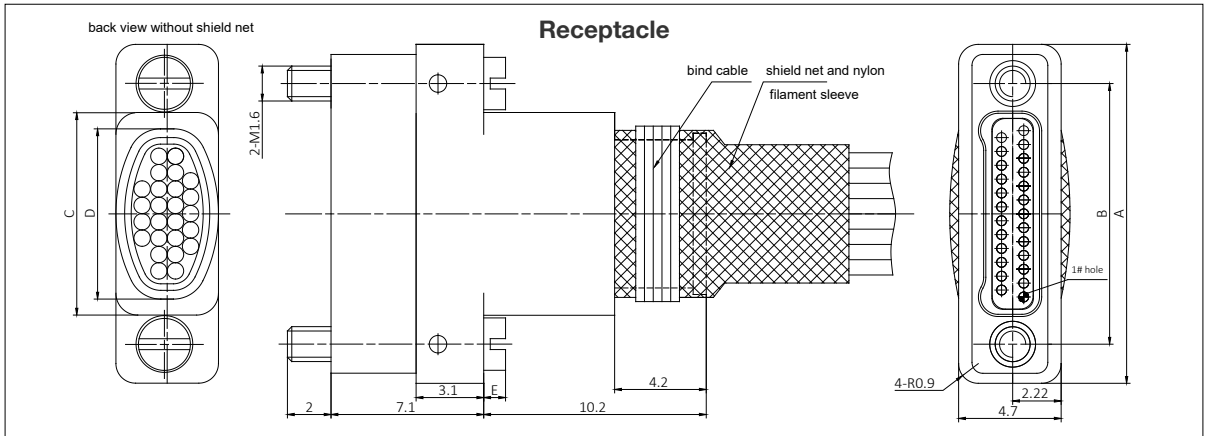


Pin count	Dimension				Pin count	Dimension			
	A	B	C	D		A	B	C	D
9 pins	10.5	6.86	4.2	3.7	15 pins	12.4	8.76	6.1	5.0
21 pins	14.3	10.67	8	6.6	25 pins	15.6	11.94	9.3	7.8
31 pins	17.5	13.84	11.2	9.4	37 pins	19.4	15.75	13.1	11.2
51 pins	23.8	20.19	17.55	15.7	65 pins	28.3	24.64	22.0	20.1
69 pins	29.5	25.91	23.25	21.4					

Note: All dimensions are in mm

MIL-DTL-32139 Nano D-Sub Space Connectors N06S Free Mounted Crimp Connector with Tail Cover Series

Outline dimension



Pin count	Dimension				Pin count	Dimension			
	A	B	C	D		A	B	C	D
9 pins	10.5	6.86	4.2	3.7	15 pins	12.4	8.76	6.1	5.0
21 pins	14.3	10.67	8.0	6.6	25 pins	15.6	11.94	9.3	7.8
31 pins	17.5	13.84	11.2	9.4	37 pins	19.4	15.75	13.1	11.2
51 pins	23.8	20.19	17.55	15.7	65 pins	28.3	24.64	22.0	20.1
69 pins	29.5	25.91	23.25	21.4					

Note: All dimensions are in mm

MIL-DTL-32139 Nano D-Sub Space Connectors

N06S Vertical Mounted Crimp Connector with Tail Cover Series

Order Code

Series	N06S	-2	2	1	-C	1	-25	PI	1	-TH
Contact row:										
2 — two rows										
Shell plating:										
2 — nickel plating										
Contact plating:										
1 — gold plating										
Termination type :										
C— crimp										
Mounting style:										
1 - vertical mounted										
Contact number:										
9, 15, 21, 25, 31, 37, 51, 65, 69										
Contact type										
PI— pin in plug RH— socket in receptacle										
Tail cover :										
1— with tail cover										
Locking type:										
TH — connect nut										



PI

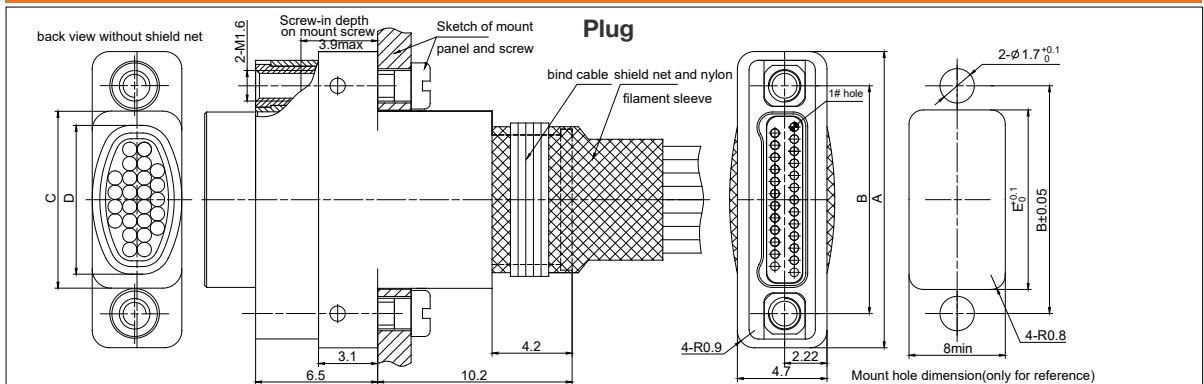


RH

Notes

- Connector has an integrated non-removable tail cover. Apply shielding material onto tail cover to provide shielding for the whole connector
- Connector is usually mated with a plug or receptacle connector which has a locking screw
- Due to dimensional limitations, these connectors cannot be used with a standard M1.6mm screw. These connectors are provided with a bespoke M1.6 x 6 mounted screw.

Outline dimension

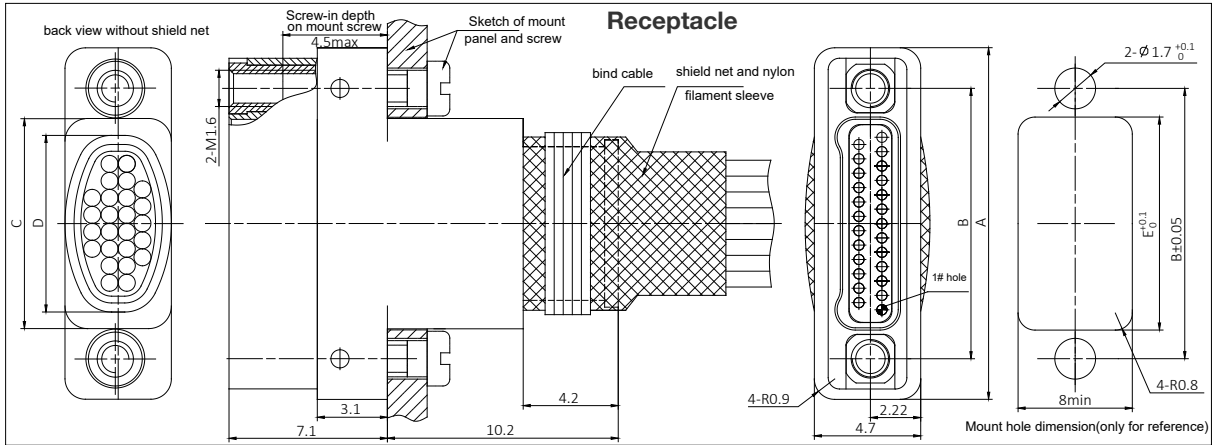


Pin count	Dimension					Pin count	Dimension				
	A	B	C	D	E		A	B	C	D	E
9 pins	10.5	6.86	4.2	3.7	4.3	15 pins	12.4	8.76	6.1	5.0	6.2
21 pins	14.3	10.67	8.0	6.6	8.1	25 pins	15.6	11.94	9.3	7.8	9.4
31 pins	17.5	13.84	11.2	9.4	11.3	37 pins	19.4	15.75	13.1	11.2	13.2
51 pins	23.8	20.19	17.55	15.7	17.65	65 pins	28.3	24.64	22.0	20.1	22.1
69 pins	29.5	25.91	23.25	21.4	23.35						

Note: All dimensions are in mm

MIL-DTL-32139 Nano D-Sub Space Connectors N06S Free Mounted Crimp Connector with Tail Cover Series

Outline dimension



Pin count	Dimension					Pin count	Dimension				
	A	B	C	D	E		A	B	C	D	E
9 pins	10.5	6.86	4.2	3.7	4.3	15 pins	12.4	8.76	6.1	5.0	6.2
21 pins	14.3	10.67	8.0	6.6	8.1	25 pins	15.6	11.94	9.3	7.8	9.4
31 pins	17.5	13.84	11.2	9.4	11.3	37 pins	19.4	15.75	13.1	11.2	13.2
51 pins	23.8	20.19	17.55	15.7	17.65	65 pins	28.3	24.64	22.0	20.1	22.1
69 pins	29.5	25.91	23.25	21.4	23.35						

Note: All dimensions are in mm

MIL-DTL-32139 Nano D-Sub Space Connectors

N06S Horizontal Mounted Crimp Connector with Tail Cover Series

Order Code

Series	N06S	-2	2	1	-C	3	-25	PI	1	-TH
Contact row:	2 — two rows									
Shell plating:	2 — nickel plating									
Contact plating:	1 — gold plating									
Termination type :	C — crimp									
Mounting style:	3 - horizontal mounted									
Contact number:	9, 15, 21, 25, 31, 37, 51, 65, 69									
Contact type	PI — pin in plug RH — socket in receptacle									
Tail cover :	1 — with tail cover									
Locking type:	TH — connect nut									



PI

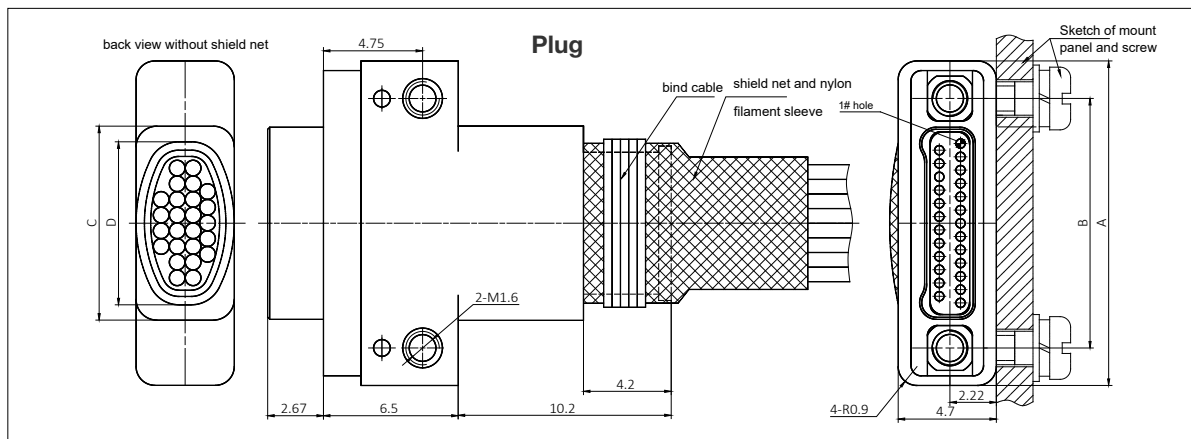


RH

Notes

- Connector has an integrated non-removable tail cover. Apply shielding material onto tail cover to provide shielding for the whole connector
- Connector is usually mated with a plug or receptacle connector which has a locking screw

Outline dimension



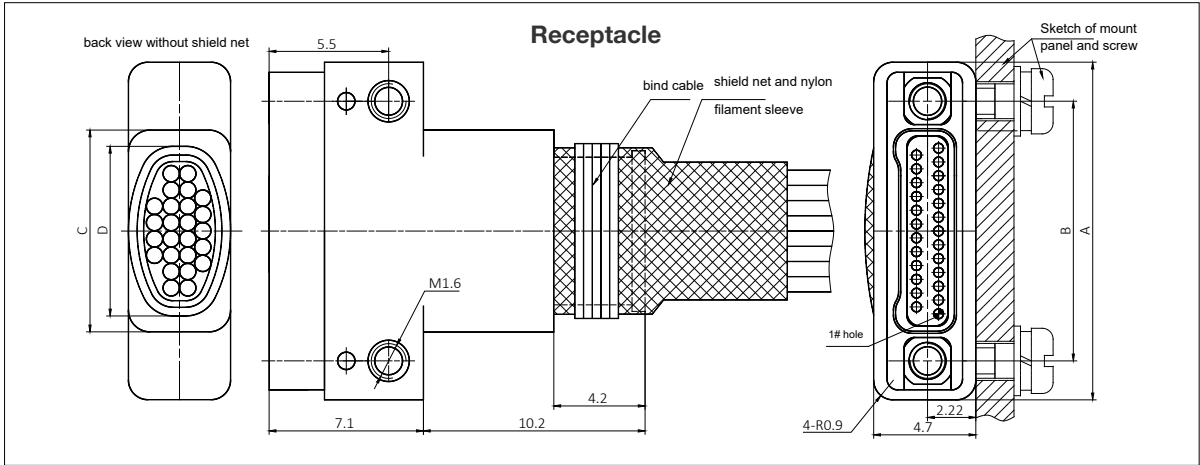
Pin count	Dimension				Pin count	Dimension			
	A	B	C	D		A	B	C	D
9 pins	10.5	6.86	4.2	3.7	15 pins	12.4	8.76	6.1	5.0
21 pins	14.3	10.67	8.0	6.6	25 pins	15.6	11.94	9.3	7.8
31 pins	17.5	13.84	11.2	9.4	37 pins	19.4	15.75	13.1	11.2
51 pins	23.8	20.19	17.55	15.7	65 pins	28.3	24.64	22.0	20.1
69 pins	29.5	25.91	23.25	21.4					

Note: All dimensions are in mm

MIL-DTL-32139 Nano D-Sub Space Connectors

N06S Horizontal Mounted Crimp Connector with Tail Cover Series

Outline dimension



Pin count	Dimension				Pin count	Dimension			
	A	B	C	D		A	B	C	D
9 pins	10.5	6.86	4.2	3.7	15 pins	12.4	8.76	6.1	5.0
21 pins	14.3	10.67	8.0	6.6	25 pins	15.6	11.94	9.3	7.8
31 pins	17.5	13.84	11.2	9.4	37 pins	19.4	15.75	13.1	11.2
51 pins	23.8	20.19	17.55	15.7	65 pins	28.3	24.64	22.0	20.1
69 pins	29.5	25.91	23.25	21.4					

Note: All dimensions are in mm